

NARROW-BANDING UPDATE

Timeframe and Issues

Topics

2

- Background
- Situation
- Implications to Agencies
 - Statement of Work, Contract Framework
 - Document Processing (\$\$\$\$)
- Implications to Statewide Mutual Aid

Presenters

3

<ul style="list-style-type: none"> □ Steve Rauter <ul style="list-style-type: none"> ■ Executive Director WESCOM ■ Western Will County Communications Center ■ SRauter@WESCOM-9-1-1.org ■ 815-267-8314 	<ul style="list-style-type: none"> □ Billy Carter <ul style="list-style-type: none"> ■ APCO Associate Northern Illinois Frequency Advisor ■ Grundy County ETSB ■ carterb@apco911.org ■ 312-907-0747 □ Steve Surwillo <ul style="list-style-type: none"> ■ CDX Wireless ■ steve.surwillo@cdxwireless.com □ Chris Kindelspire <ul style="list-style-type: none"> ■ APCO Northern Illinois Frequency Advisor ■ Grundy County ETSB ■ ckspire@grundy911.org ■ (815) 405-0998
--	---

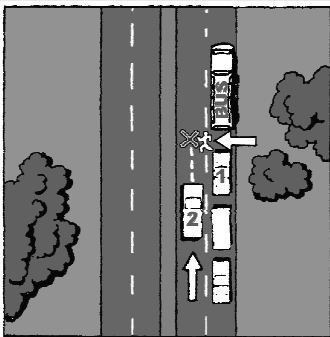
It all hooks together...or at least NEEDS to...

- NECP (National Emergency Communications Plan)
 - http://www.dhs.gov/xlibrary/assets/national_emergency_communications_plan.pdf
- SCIP (State Communications Interoperability Plan)
SIEC (State Interoperability Executive Committee)
 - <http://www.iema.illinois.gov/SCIP.asp>
- TICP (Tactical Interoperability Communications Plan)
 - http://www.safecomprogram.gov/SAFECOM/library/interoperabilitybasics/1510_stateregionurbanarea.htm
- Daily Operations, Local Systems
 - Do your homework!

Refarming?



Get 4 lanes for the price of 2?



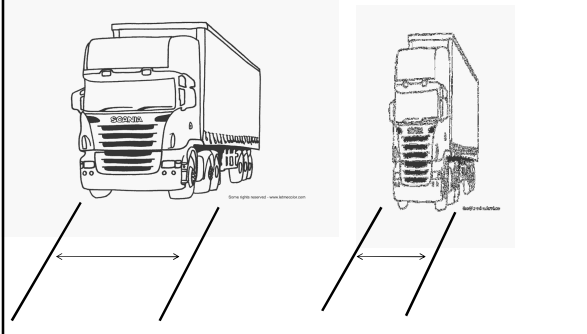
1950's Technology, upgraded for efficiency?

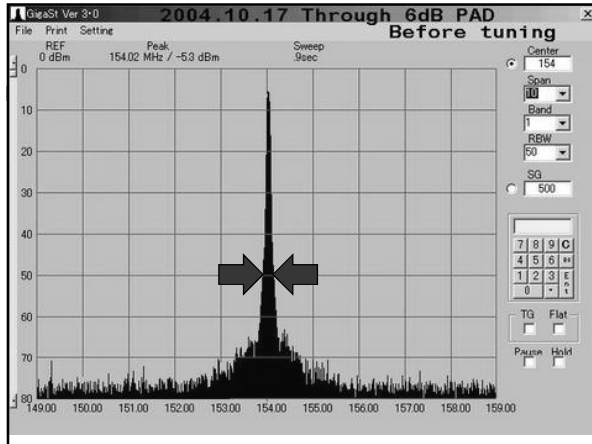


Can you see "it" coming?



"Skinnier" Vehicles?





Illinois APCO Activities Re: Narrowbanding

- Narrowbanding is an important issue to the APCO Illinois Chapter
- The Chapter supports the Illinois APCO Narrowband Committee, a group specifically focused on addressing narrowbanding in single-agency, interoperable and mutual-aid systems
- To follow this issue, subscribe to IllinoisNarrowBand Yahoo Group at <http://tech.groups.yahoo.com/group/IllinoisNarrowBand/>

Background – FCC Ruling, Timelines

- In December 2004, the Federal Communications Commission (FCC) mandated that all private Land Mobile Radio (LMR) users operating below 512 MHz move to 12.5 kHz narrowband voice channels and highly efficient data channel operations by January 1, 2013.
- As of Tuesday, May 4, 2010, there are 972 days (139 weeks, or 32 months, or 2.66 years) until this mandate goes into effect.
- April 2011 – November 2011 Wisconsin will convert all common and mutual aid channels (322 days!!!!) Do you border Wisconsin???
- State of Illinois: Tentative Plan
 - April 2012, start region by region, by discipline

Equivalent Efficiencies

- FCC mandates efficiency, not channel width
- Efficiencies that meet FCC certification rules for 2011:
 - 2 voice paths in ONE 12.5k channel
 - 4 voice paths in ONE 25k channel
 - 1 voice path in ONE 6.25k channel
 - DATA:
 - 4800 bps per 6.25k
 - 9600 bps per 12.5k channel
 - 19200 bps per 25k channel
 - Project 25 standards still under development
 - 2 voice paths per 12.5k channel is current direction
 - **THERE IS NO MANDATE TO GO TO PROJECT 25 BY 2013!!!!**

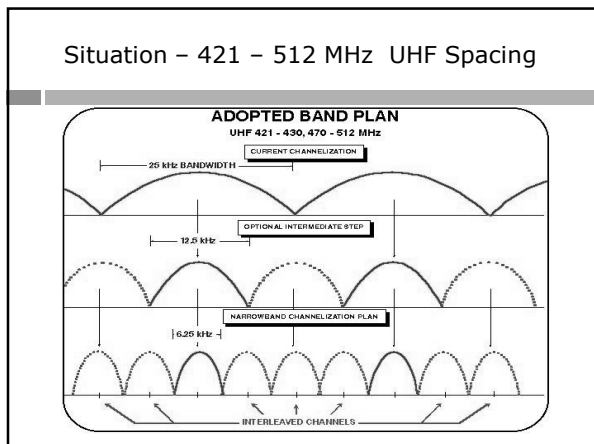
Background – Important Dates

Narrowbanding Milestones	Relevant Date
Radio Certifications must include 12.5k efficiency Last Day for New 25 kHz Wideband Applications	February 14, 1997 January 1 st , 2011
Last Day for Modification Applications To Expand Contours Of 25 kHz Systems	January 1 st , 2011
End Of Manufacturer Building Or Importing 25 kHz-Only Equipment	January 1 st , 2011
End Of Equipment Certification Of 12.5 kHz-Only Equipment w/o 6.25 kHz Equivalent Mode	January 1 st , 2011
Mandatory B/ILT 12.5 kHz Conversion	By January 1 st , 2013*
Mandatory PS 12.5 kHz Conversion	By January 1 st , 2013*
Mandatory Paging-Only Conversion (CAUTION!)	Not required to comply
Mandatory 6.25 kHz Conversion	Not Until "Technology Matures"

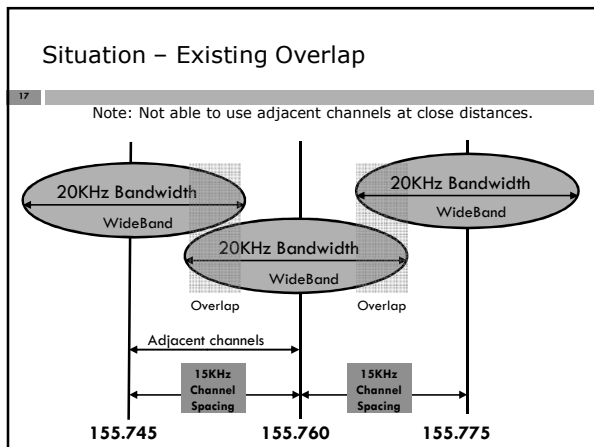
* - NOTE: March 2007 Order encourages licensees to go right to 6.25 kHz efficiency equipment and skip 12.5 kHz step, if possible.

Situation – 150 – 170 MHz VHF Spacing

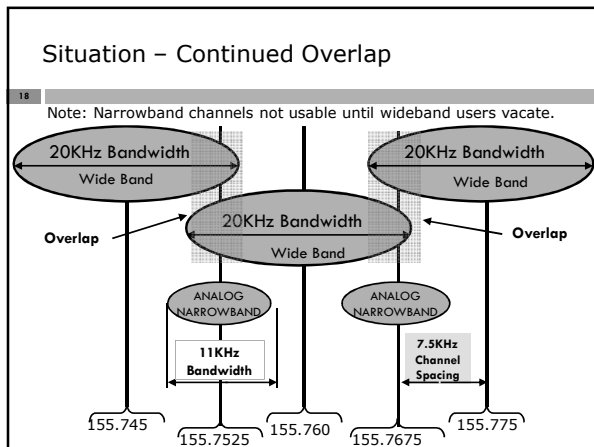
Situation - 421 - 512 MHz UHF Spacing

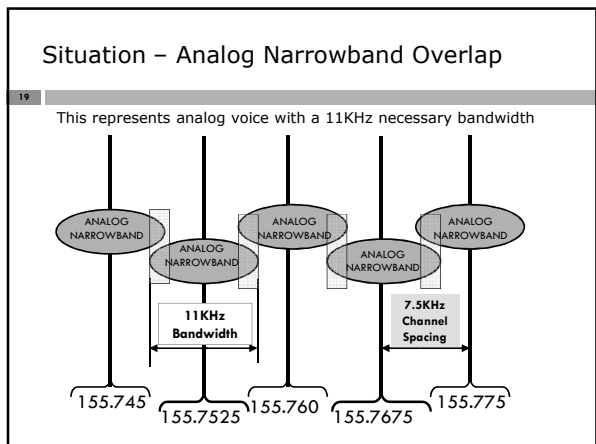


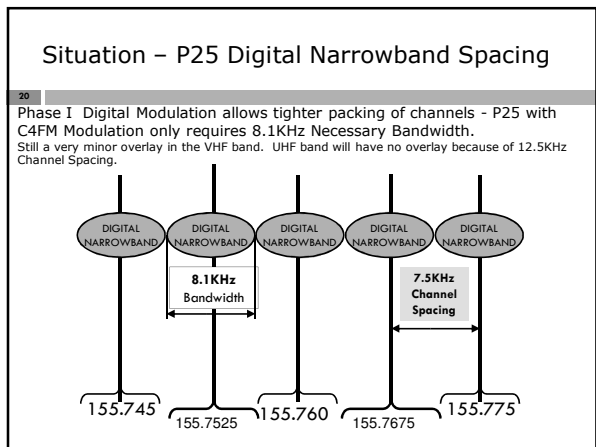
Situation - Existing Overlap

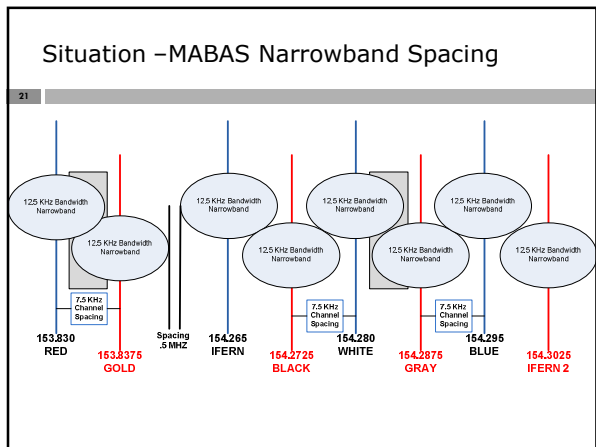


Situation - Continued Overlap





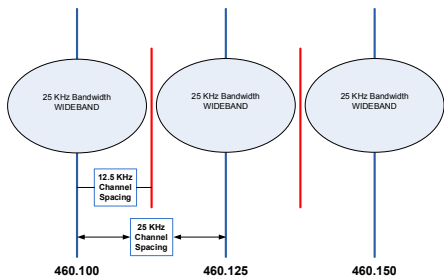




Situation – Existing UHF Allocation

22

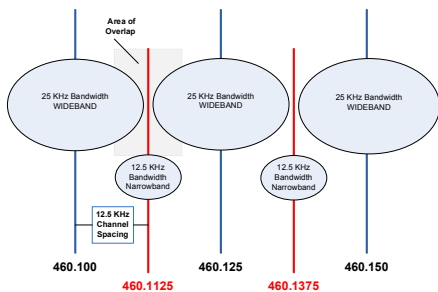
Note: Adjacent wideband channels useable at close distances.



Situation – Added UHF Narrowbanded Channels

23

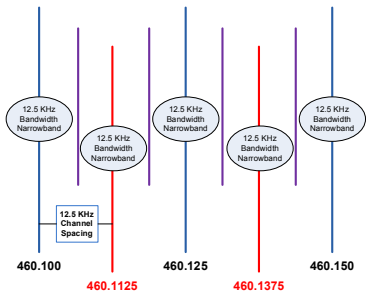
Note: Narrowband channels not usable until wideband users Narrowband.



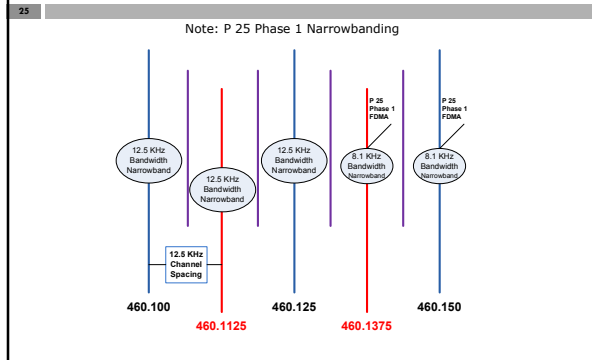
Situation – Completion of Narrowbanding all Channels

24

Note: After all channels have been Narrowbanded



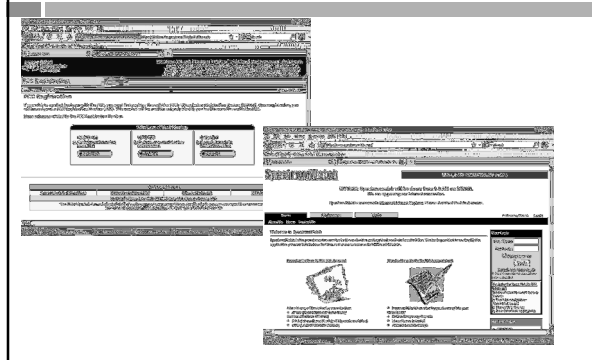
Situation – If P 25 Phase 1 is used



Implications to Agencies – Conversion Plan

- 26
- One plan for compliance*:
 - Verify that your company or organization has a current and valid FCC Part 90 radio station license
 - Conduct a full inventory of all radios in your system
 - Including all portable, mobile, dispatcher-used, wireless data or SCADA, and on or off-site base or repeater radios (include makes and models and, if possible, sn's)
 - Determine which equipment can be re-programmed and which must be replaced
 - Secure your budget for services and equipment
 - Develop a "wideband"-to-"narrowband" system conversion plan that addresses:
 - The replacement and installation of any narrowband-capable off-site base or repeater stations
 - The actual reprogramming of all radios in a system as close to simultaneously as possible
 - Work closely with a professional two way radio service vendor
 - Schedule and coordinate the actual system conversion (or cutover)
 - Make certain that all radio users have been advised in advance and are aware of the process.
 - Modify your FCC radio station license to remove any "wideband" emission designators, replacing them with the correct "narrowband" ED's
 - Make any other changes or updates to a license that may be required
 - Note that the conversion plan must be tailored for each agency
 - Source: <http://www.qualitymobile.com/Part90NBNav.htm> (Author: Nick Kuark)

FCC Website and Spectrum Watch



Implications to Agencies – Equipment Capabilities

28

- There is currently no database that lists equipment capabilities for narrowband compliance by manufacturer, model, and version
- Most manufacturers rely on vague statements about their equipment's narrowband capabilities
 - "Anything manufactured after 1996"
 - "All products made the last 10 years"
- VHF radios have unique implication of 7.5KHz spacing
- Note that programming of radios can be tricky – some parameters may round-up, others may accept changes and then round them up
 - Be sure to look for 2.5KHz offset
- One approach is to verify capabilities is to test equipment, reprogram equipment, retest, and document all results
- Work with your vendor to determine if your coverage will be reduced from narrowbanding
- Remove all 25k channels from radios by 1/1/2013.

Implications to Agencies – Equipment Capabilities (cont)

- Mandatory Paging-Only Conversion (CAUTION!)
- Paging Channels exempt from Narrowbanding are:
- 152.0075 MHz
- 157.4500 MHz
- Channelized Bi-Directional Amp(s) (BDA)
- SCADA equipment for public works
- Fire Station Alerting
- Telemetry
- MotoTRBO (caution for mutual aid/common channels)

Implications to Agencies - Licensing

30

- Licensees that fail to comply could lose their license
- Get assistance from Coordinators:
 - APCO Northern Illinois Frequency Advisor: Christopher R Kindelspire
 - (815) 405-0998
 - ckspire@grundy911.org
 - APCO Southern Illinois Frequency Advisor: Thomas J Ward
 - (217) 782-5742
 - wardt@apco911.org
 - APCO Associate Illinois Frequency Advisor: William J Carter
 - (312) 907-0747
 - carterb@apco911.org
- Also utilize APCO's Automated Frequency Coordination (AFC)
 - <http://www.apcointl.org/frequency/>
 - AFC is accepting changes in emission designator (from WB to NB) for all licenses under a single call sign for \$25.00.
 - FCC ULS website - soon

Implications to Statewide Mutual Aid

31

- Narrowbanding will impact a number of Illinois mutual aid channels including:
 - MABAS, IREACH, MERCI, ISPERN, IFERN, ESMRN, Police Point-to-Point, NATSAR, and statewide Telemetry (UHF "Meds 1-8") channels
- Narrowbanding these channels will be difficult because:
 - They are deployed statewide but with low licensed user-count per agency
 - These channels are used for mobile-to-mobile communications (tactical), no infrastructure for local agencies.
 - There is no system infrastructure to serve as a cut-over event
 - There is no dedicated staff to manage the statewide transition
 - There is no motivation to be the first to transition because doing so removes mutual aid communications
- Illinois SIEC Plan being firmed up

Implications to Statewide Mutual Aid

32

- Planning, coordination, and communications are critical to addressing this issue
- Similar to addressing a single-agency conversion, narrowbanding statewide mutual aid needs to involve:
 - Developing an outreach plan for two-way info flow
 - Assessing assets
 - Determining what to program and what to replace
 - Developing a conversion plan with budget and schedule
 - Completing the reprogramming/replacement plan on a region-by-region (MABAS region, ISP region, etc) basis
 - Statewide mutual aid may be disrupted temporarily but the impact to regions can be lessened
 - Executing the reprogramming/replacement plan with coordination, communication and performance measurement

Implications to Statewide Mutual Aid

- Phase Plan, per SIEC
 - 1: Now – March 31, 2012. Licensing, inventory, budget, procurement
 - 2: Now – March 31, 2012. Programming and formatting for BOTH wide-band and narrow-band
 - 3: Draft calendar**, roll-out. April 1, 2012 – Oct 31, 2012.
 - 4: Removed WB channels. November 1, 2012 – December 31, 2012.
- Draft Calendar**
 - Regional
 - Phased
 - Grouped by logical discipline

What Can You Do Now?

34

1. Stay informed – read Reports, Orders, and other guides
2. Help push manufacturers to release firm statements about their equipment's narrowband capabilities by model, version and/or date code
 - They did it for re-banding, they should be able to do it for narrowbanding
3. If you are planning now, include mutual aid radios in your inventory and your budget
4. Join Illinois APCO
 - See Jason Kern or Steve Rauter
5. Help us lobby at the state and national level for technical assistance and funding
 - Continued support of mutual aid is in Illinois' SCIP
 - DHS recognizes issue in National Emergency Communications Plan (NECP)

Resources and References

35

- <http://www.apcointl.org/frequency/documents/NBFLIER.pdf>
 - Narrowband pricing
- <http://www.apcointl.org/frequency/>
 - AFC web site
- <http://www.apcointl.com/frequency/documents/NarrowbandOrder.html>
 - FCC Report and Order
- http://tech.groups.yahoo.com/group/LMR_Narrowbanding/
 - Land Mobile Radio narrowbanding (not just Public Safety)
- <http://www.npstc.org>
 - National Public Safety Telecommunications Council

Resources and References

- <http://www.ojp.usdoj.gov/nij/topics/technology/communication/fcc-narrowbanding.htm>
- <http://www.apcointl.com/services/bulletin/documents/Narrowbanding.pdf>
- <http://www.ilapco.org/narrowband.htm>
- http://web1.ctaa.org/webmodules/webarticles/articlefiles/Executive_Summary%20111608.pdf
